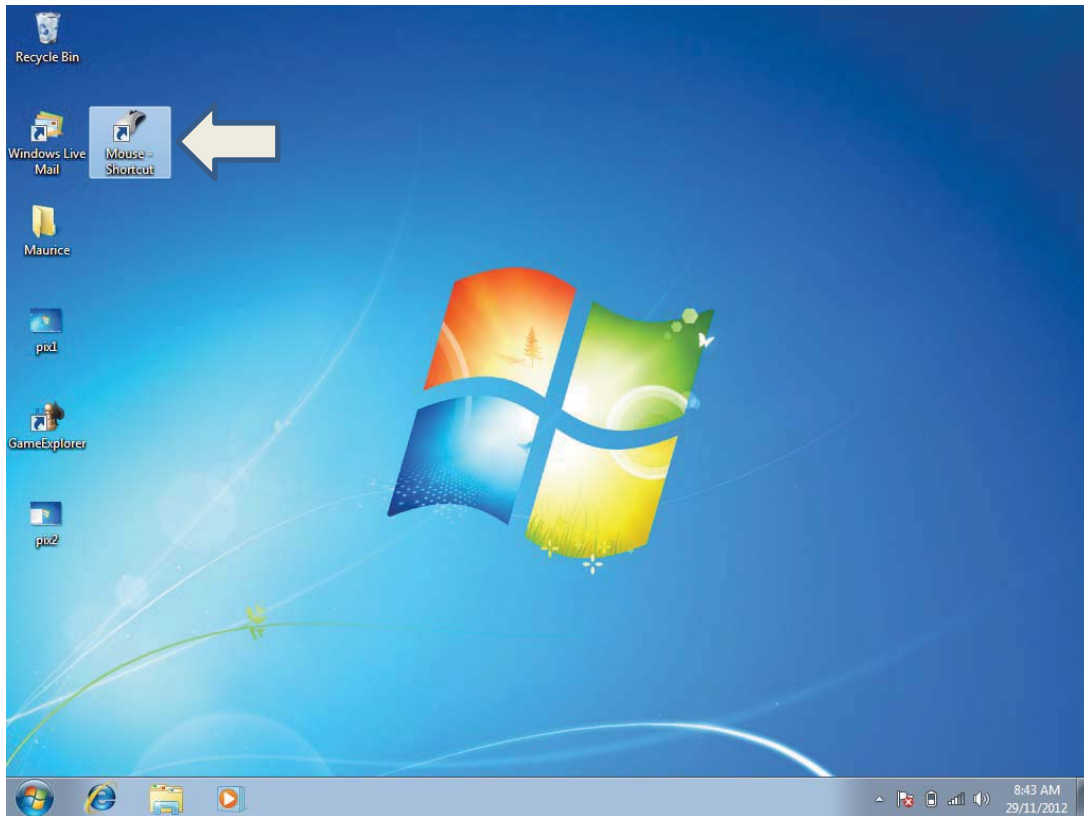
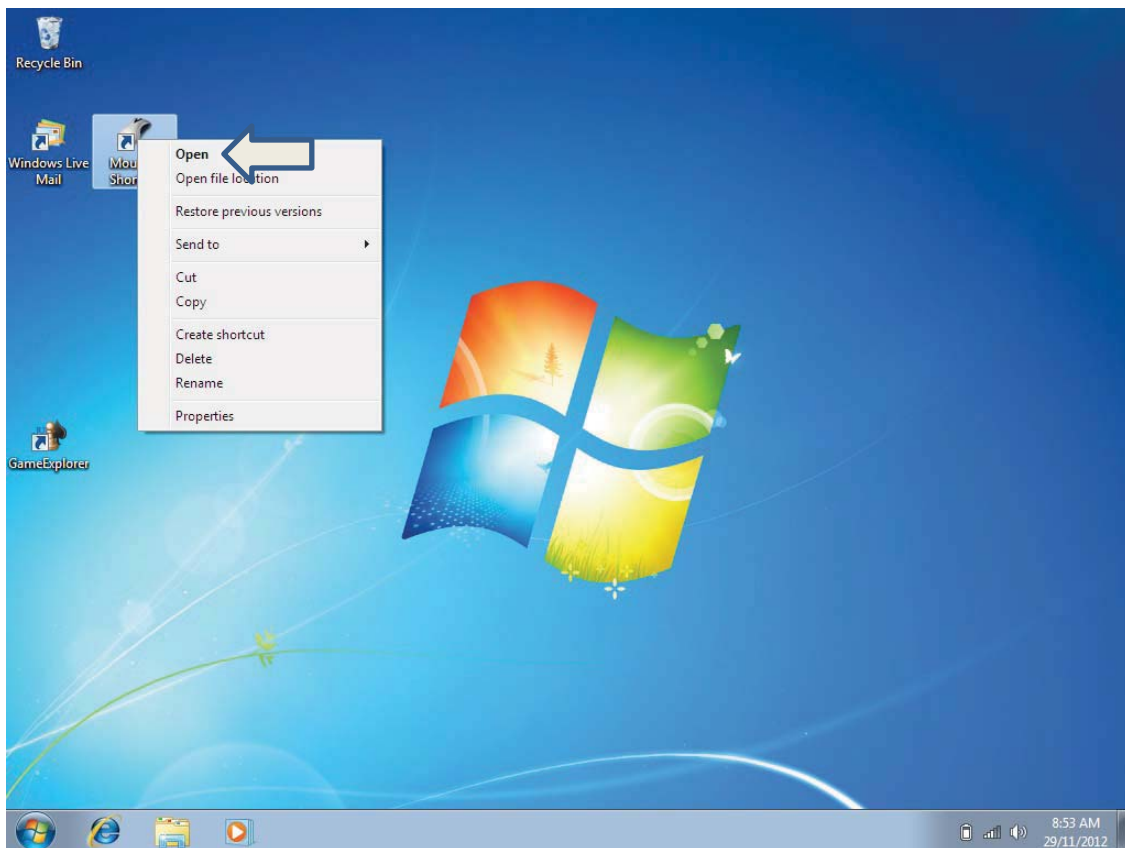


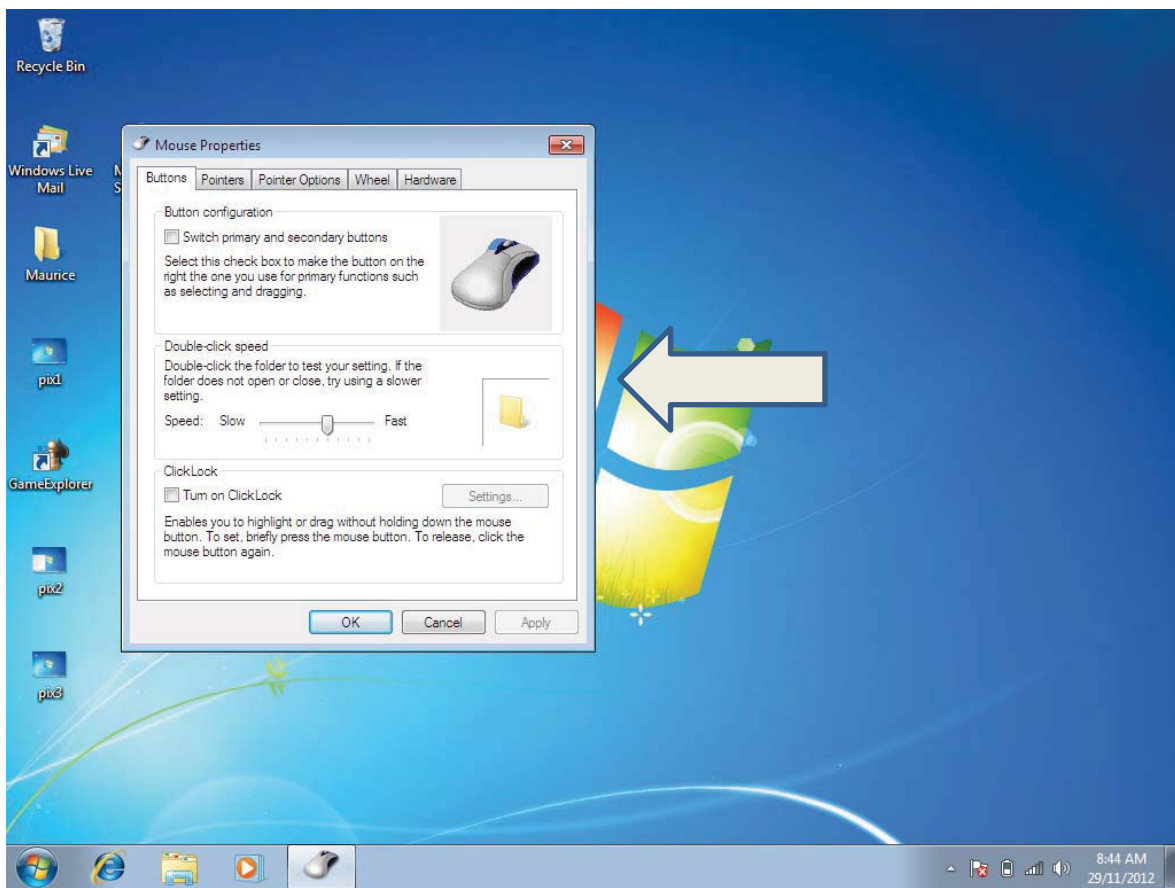
# How to change the mouse double click speed



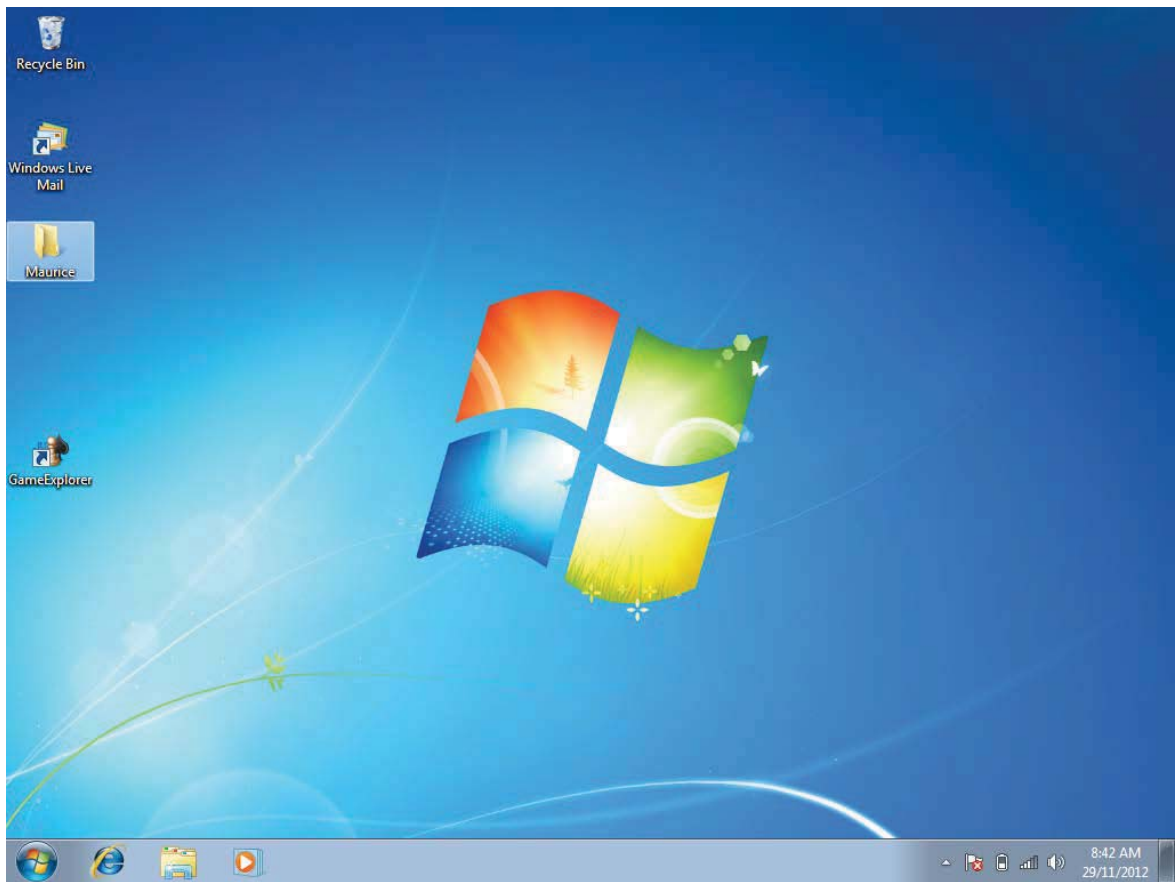
Double click on the “Mouse Settings” shortcut on your desktop



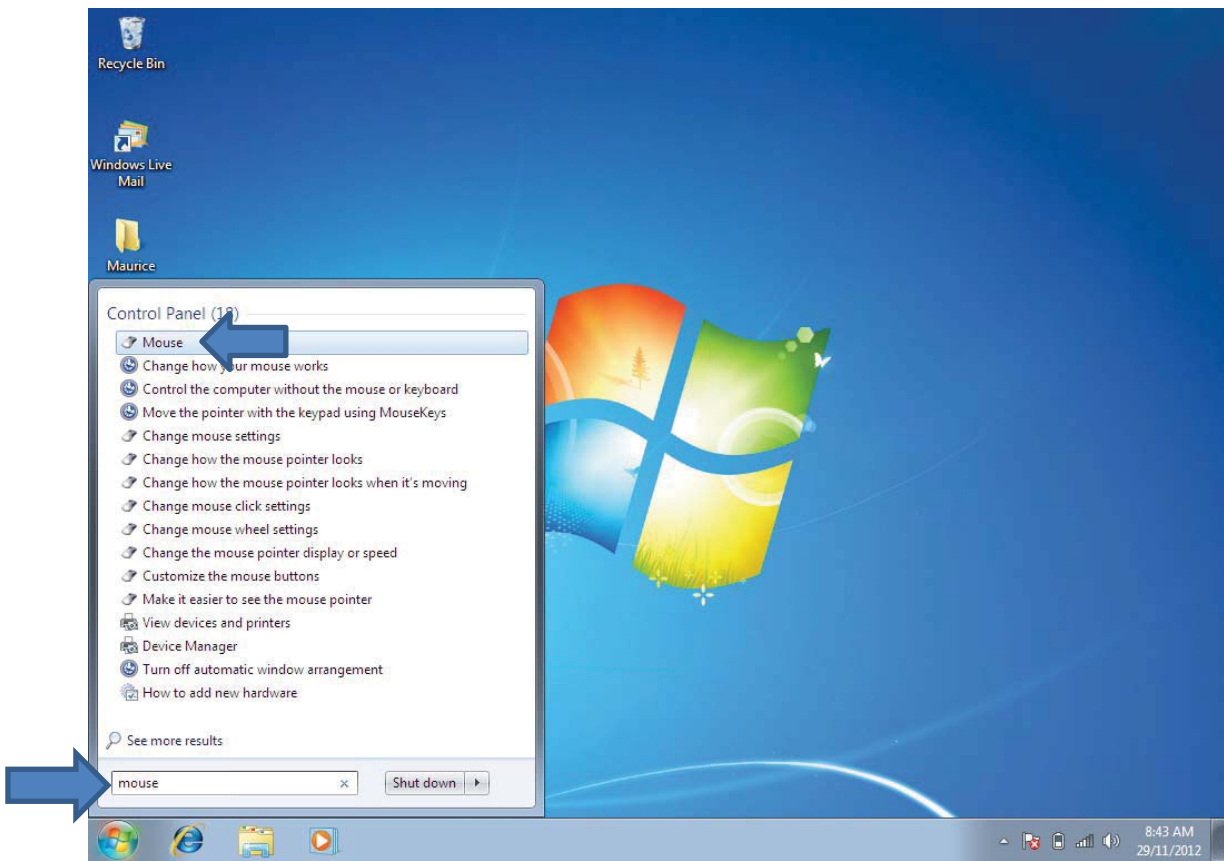
If you find it difficult to double click you can try one click with your right mouse button. This will display a drop down menu. Now select “Open” with your left mouse button.



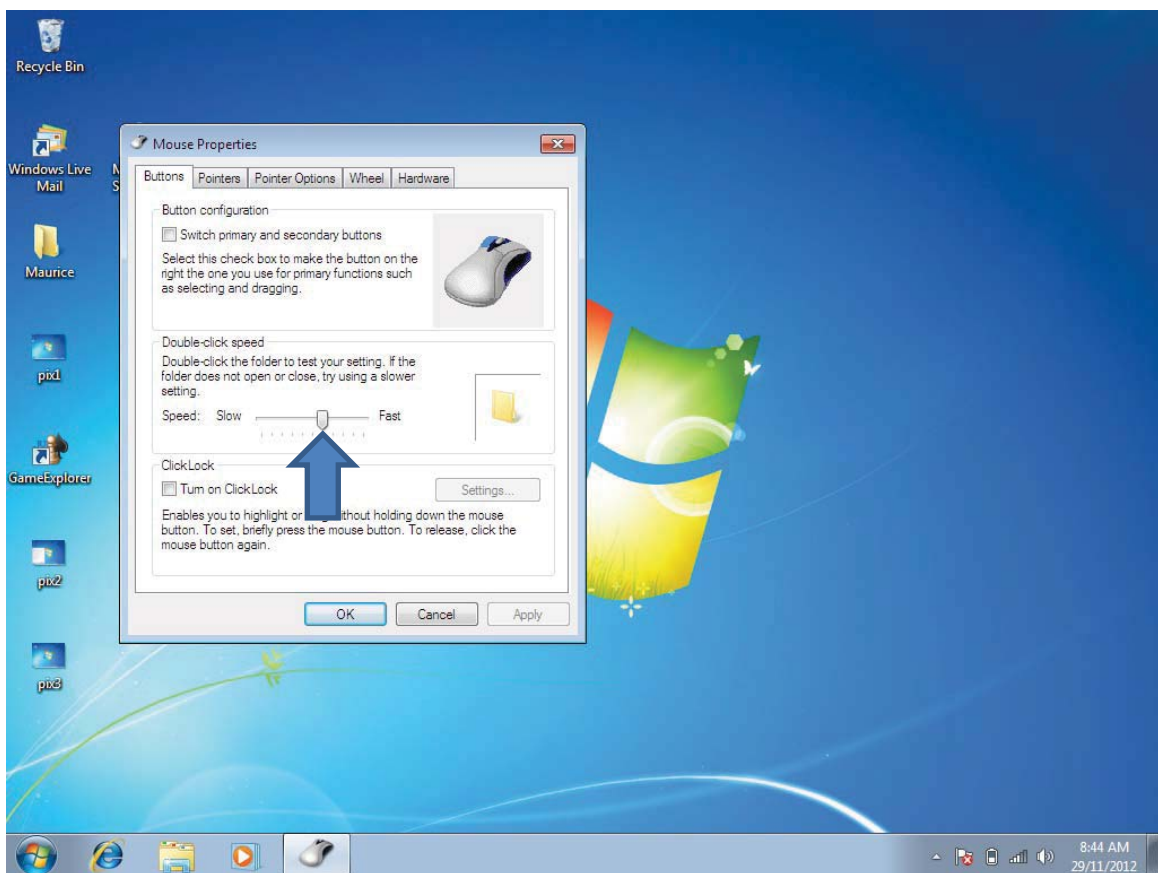
The mouse properties screen appears.



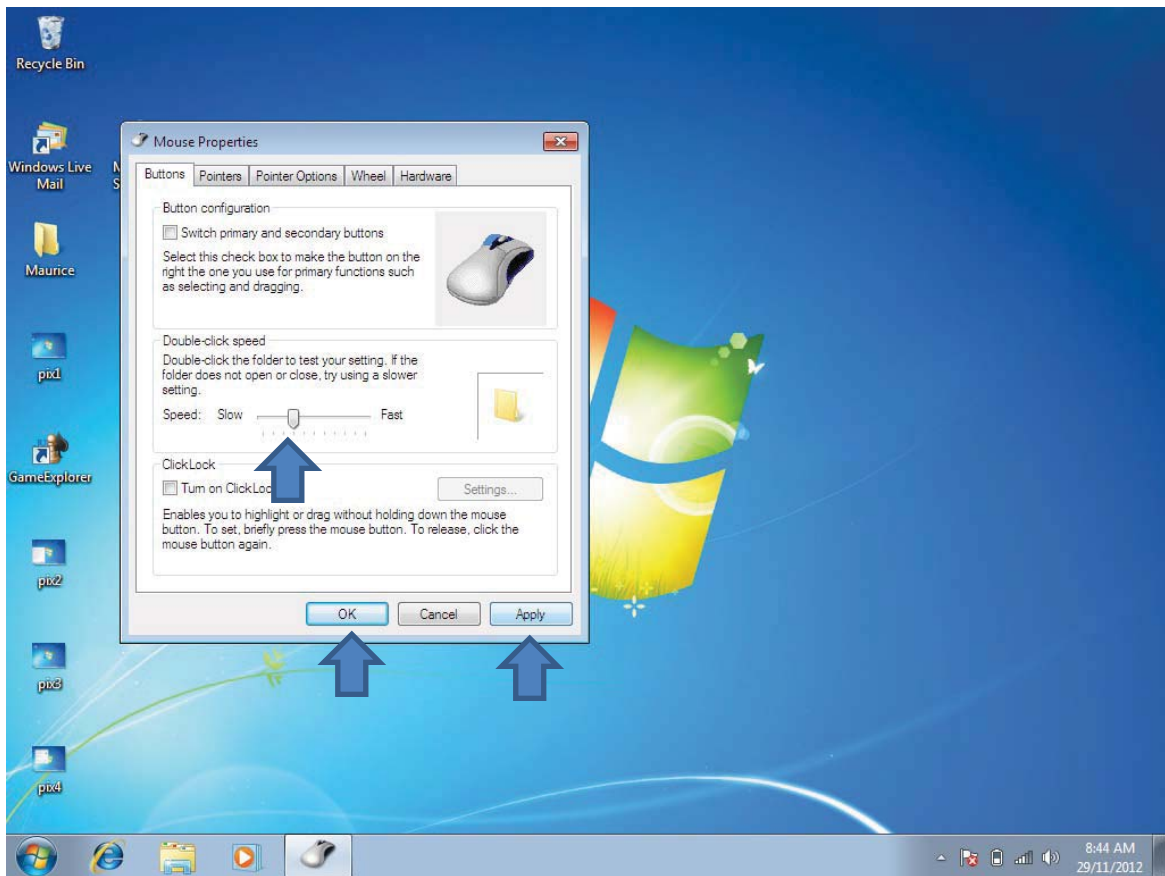
If you don't have a mouse setting icon on your desktop - click on the start orb....



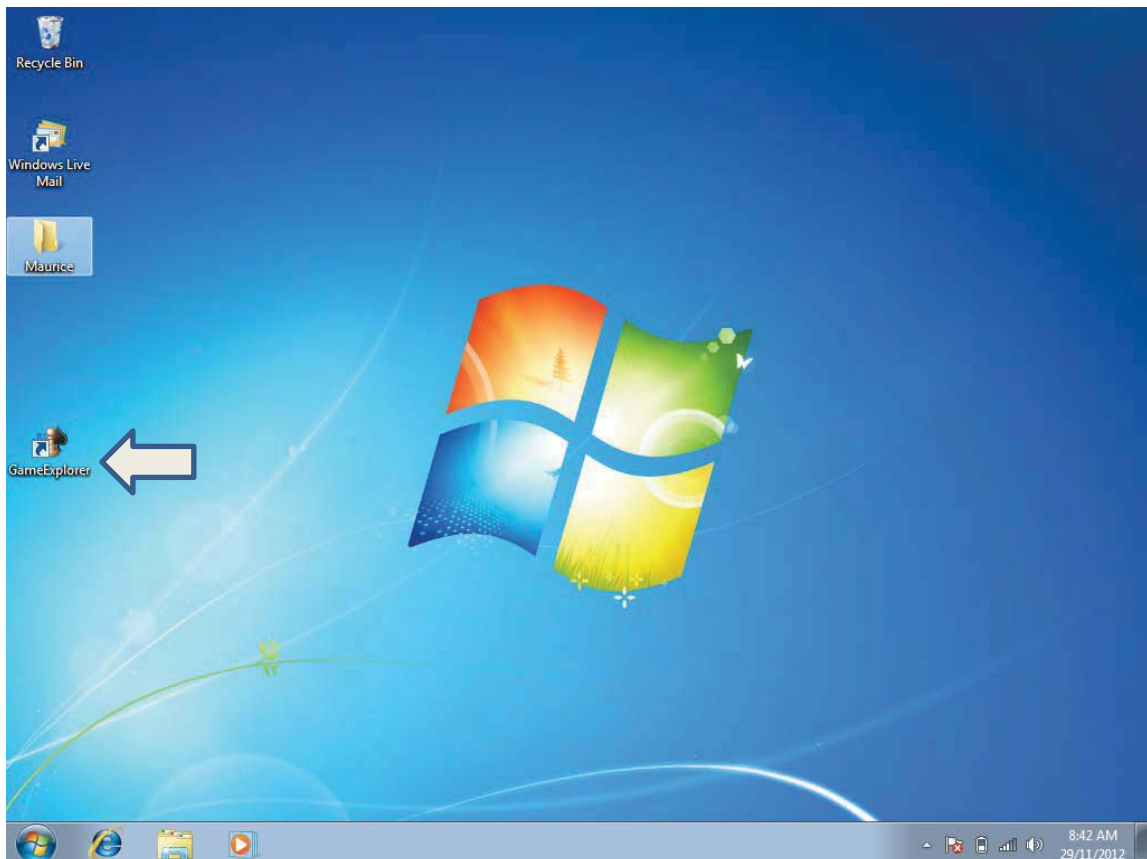
And type “Mouse” into the search bar. Then left click on “Mouse” at the top of the list



This will display the “Mouse Properties” box. To make the mouse double click speed slower, slide to the left. To make it faster, slide to the right. Slide by left clicking on the slider, holding down the left button and dragging to the left or right – then let go of the button.



In this example I have moved the slider to the left making the double click slower. When finished click “Apply” the click on “OK”



Now try double clicking on “Games Explorer” and see if it opens. If not repeat the procedure until you find the right double click speed to suit you.